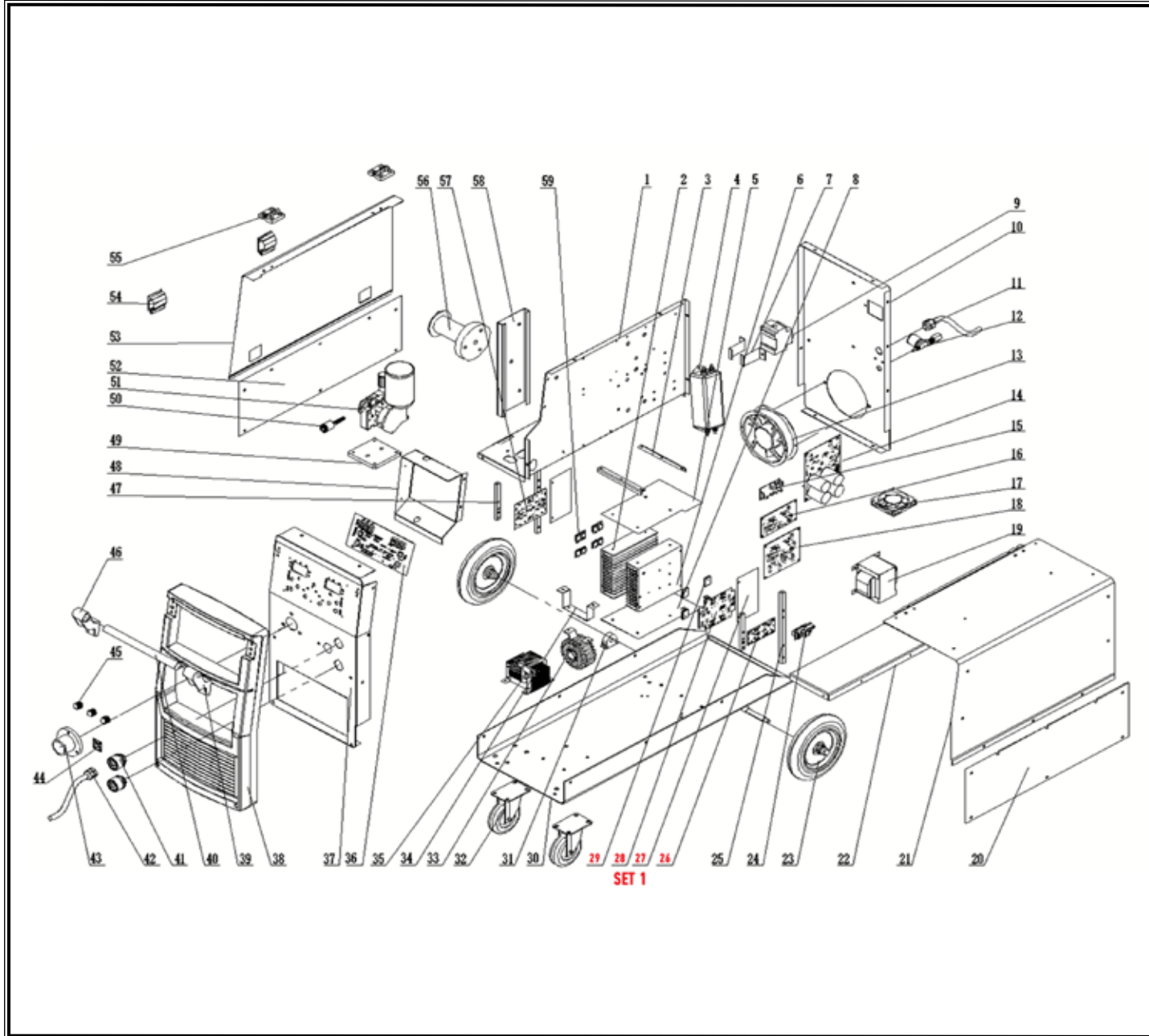


POS.	CODE	DESCRIPTION	QTY
1	A12298	VERTICAL PLATE	1
2	A12299	HEAT SINK	1
3	A12300	STRUT	2
4	A12301	FILTER	1
5	A12302	RADIATOR UPPER AIR BAFFLE	1
6	A12303	HEAT SINK	1
7	A12350	SWITCH BRACKET	2
8	A12302	RADIATOR LOWER WINDSHIELD	1
9	A12353	BREAKER	1
10	A12304	REAR PANEL	1
11	A12306	POWER INPUT HARNESS	1
12	A12348	AIR VALVE HARNESS	1
13	A12347	FAN WIRING HARNESS 2	1
14	A12311	INPUT RECTIFIER BOARD	1
15	A12323	POWER BOARD	1
16	A12305	CONTROL PCB BOARD	1
17	A12312	FAN	1
18	A12307	MAIN CONTROL PCB	1
19	A12313	CONTROL TRANSFORMER	1
20	A12314	FIXED SIDE PANEL	1
21	A12317	FIXED SIDE PANEL	1
22	A12318	BEAM	1
23	A12342	RUBBER MONO CASTERS	2
24	A12308	LOAD BOARD	1
25	A12322	RADIATOR SUPPORT COLUMN	2
SET 1 (26-29)	A12341	IGBT POWER AMPLIFIER BOARD ASSEMBLY	1
30	A12324	CHASSIS WELDING AND SPRAYING	1
31	A12329	TRANSFORMER HARNESS	1
32	A12325	UNIVERSAL CASTERS	2
33	A12326	MAIN TRANSFORMER	1
34	A12327	INTERMEDIATE FREQUENCY TRANSFORMER FIXING PLATE WELDING	1



POS.	CODE	DESCRIPTION	QTY
35	A12328	OUTPUT REACTOR	1
36	A12310	PANEL CONTROL PANEL	1
37	A12330	FRONT PANEL	1
38	A12309	PLASTIC PANEL	1
39	A12332	RIGHT SUPPORT	1
40	A12333	HANDLE	1
41	A02052	QUICK SOCKET EUROPEAN STYLE	2
42	A12316	POLARITY CONVERSION CABLE	1
43	A12335	INSULATING FLANGE	1
44	A12336	AVIATION SOCKET	1
45	A02051	POTENTIOMETER KNOB	3
46	A12337	LEFT SUPPORT	1
47	A12338	RADIATOR SUPPORT COLUMN 2	2
48	A12339	SHIELDING BOX	1
49	A12321	WIRE FEEDER PAD	1
50	A12319	CENTRAL SOCKET HARNESS	1
51	A12320	MOTOR	1
52	A12340	FIXED SIDE PANEL	1
53	A12343	ACTIVE SIDE PANEL	1
54	A12297	DOOR LOCK	2
55	A12344	PLASTIC HINGE	2
56	A12345	REEL SHAFT	1
57	A12346	RECTIFIER PLATE ASSEMBLY	1
58	A12349	WIRE REEL SHAFT MOUNTING PLATE	1
59	A12351	FAST RECOVERY DIODE	8