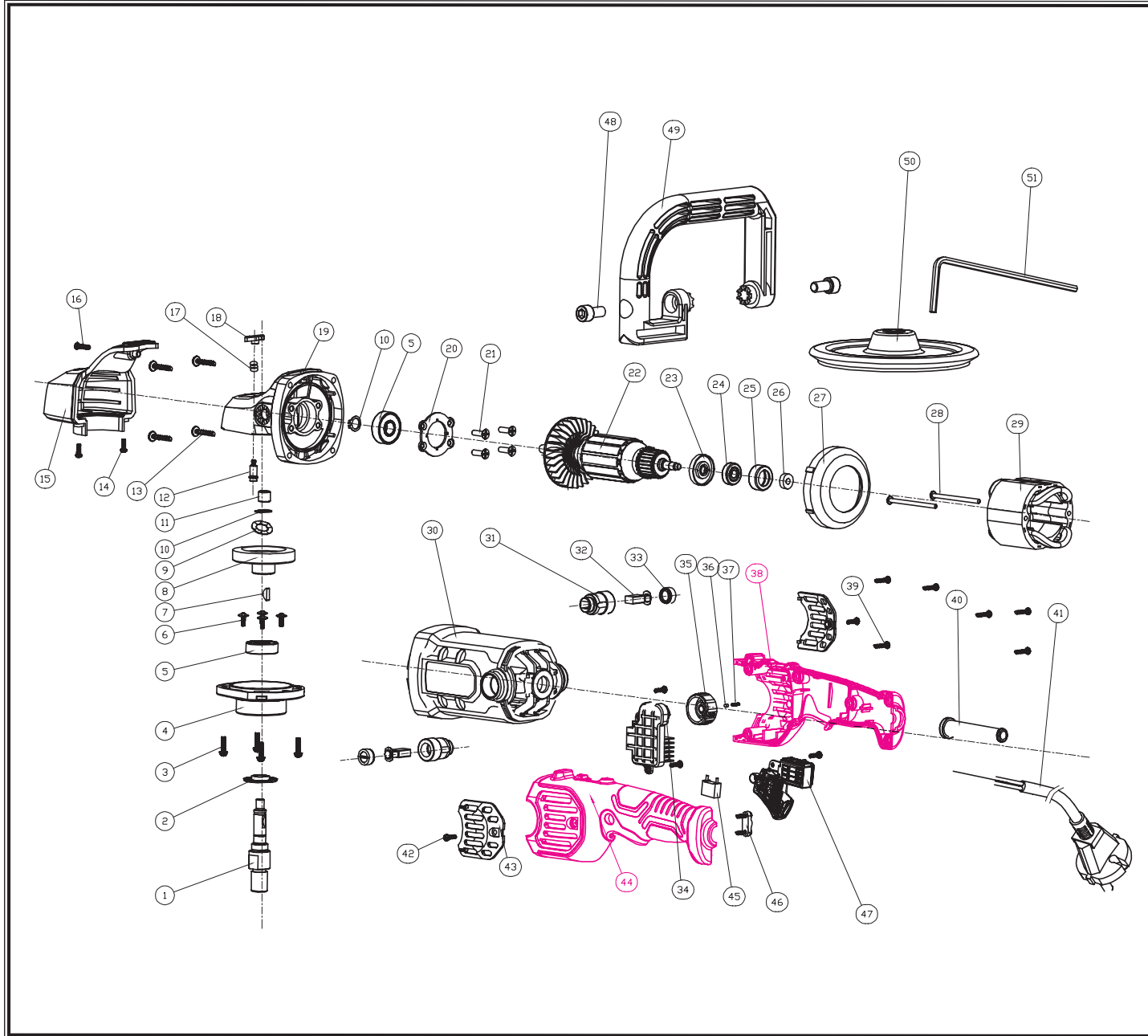


POS.	CODE	DESCRIPTION	QTY
1	A09579	SHAFT	1
2	A09580	ANTI DUST COVER	1
3	A09581	SCREW M4X14	4
4	A09582	FRONT COVER	1
5	39625	BALL BEARING 6201-2RS	2
6	A09583	SCREW M4X8	4
7	A09584	HALF CIRCLE PIN	1
8	A09585	GEAR	1
9	A09586	WAVE-SHAPE RING	1
10	A09587	CLIP RING	2
11	A09588	NEEDLE BEARING HK0810	1
12	A09589	LOCKER PIN	1
13	A09590	SCREW ST5X25	4
14	A09591	SCREW M4X10	2
15	A09592	HOUSING COVER	1
16	A09593	SCREW M4X18	1
17	A09594	PRESSING SPRING	1
18	A09595	CAP	1
19	A09596	GEAR HOUSING	1
20	A09597	BEARING PRESSING PLATE	1
21	A09598	SCREW M4X12	4
22	A09599	ROTOR	1
23	A09600	ANTI DUST RING	1
24	39619	BALL BEARING 608-2RS	1
25	A09601	BEARNG COVER	1
26	A09602	MAGNETIC RING	1
27	A09603	WIND BLOCKER	1
28	A09604	SCREW ST4.2X65	2
29	A09605	STATOR	1



POS.	CODE	DESCRIPTION	QTY
30	A09606	MOTOR HOUSING	1
31	A13477	CARBON BRUSH HOLDER	2
32	A09607	CARBON BRUSH SET	1
33	A09608	CARBON BRUSH COVER	2
34	A09609	ADJUSTOR	1
35	A09610	ADJUSTOR WHEEL	1
36	A09611	SPRING CAP	1
37	A09612	SPRING	1
SET (38+44)	A09613	RIGHT + LEFT HANDLE	1
39	A09614	SCREW ST4.2X16	6
40	A09615	POWER CABLE SEATH	1
41	40753	POWER CABLE 2X1 H07	1
42	A09616	SCREW ST4.2X12	5
43	A09617	FILTER	2
45	A09618	CAPACITOR	1
46	A09619	PRESSING PLATE	1
47	A09620	SWITCH	1
48	A09621	SCREW BOLT M10X25	2
49	A09622	D-SHAPE HANDLE	1
50	A09623	POLISHER DISC	1
51	A09624	WRENCH 8#	1