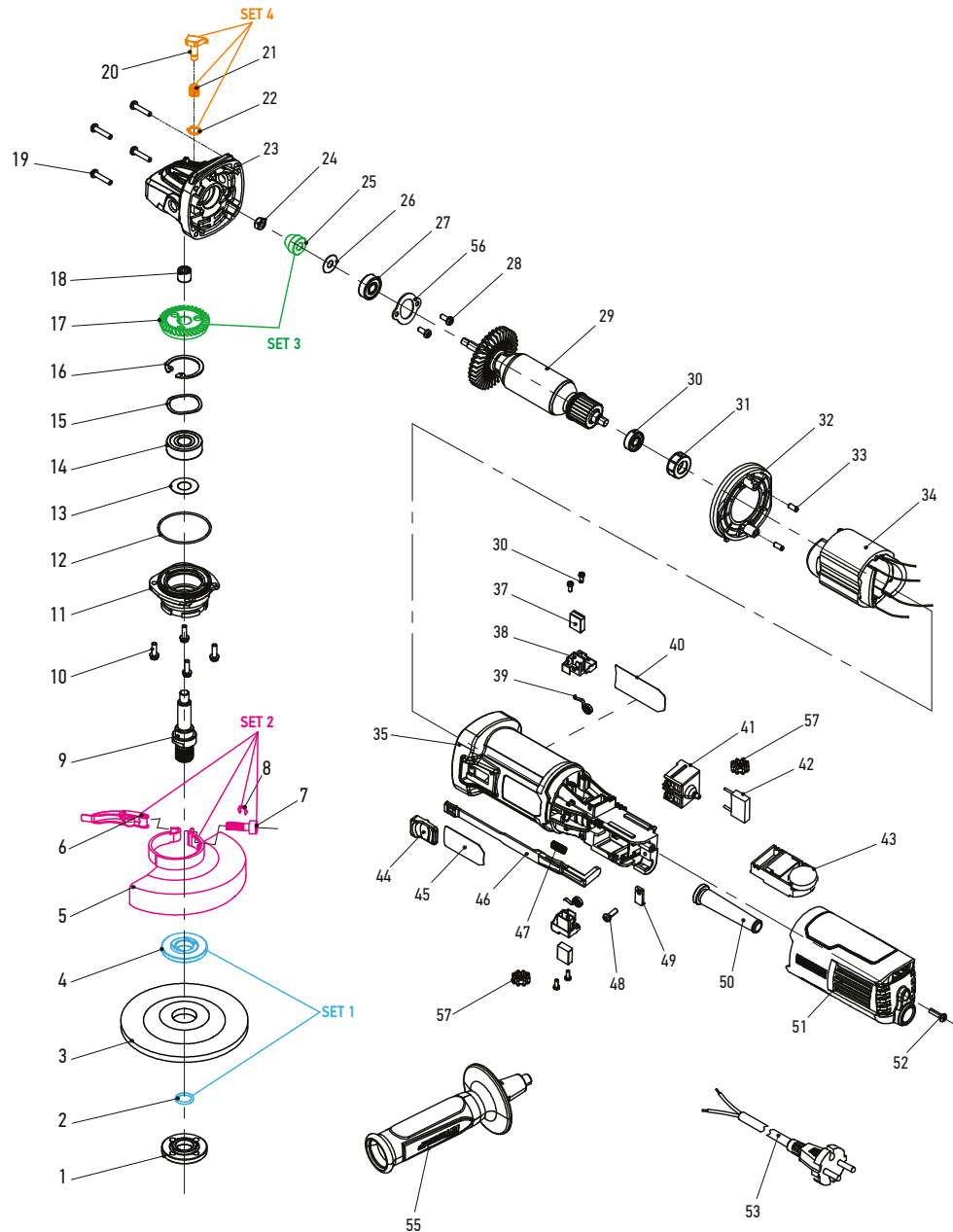


| POS. | CODE | DESCRIPTION | QTY |
|---------------|--------|---------------------------|-----|
| 1 | A03306 | CLAMP NUT | 1 |
| SET 1 (2+4) | A03307 | DISC FLANGE (WITH O-RING) | 1 |
| 3 | | GRINDING DISC 125mm | 1 |
| SET 2 (5-8) | A03308 | WHEEL GUARD 125mm | 1 |
| 9 | A03309 | OUTPUT SHAFT | 1 |
| 10 | A03310 | SCREW M4X14 | 4 |
| 11 | A03311 | GEAR BOX COVER | 1 |
| 12 | A03312 | O-RING | 1 |
| 13 | A03313 | CIRCULAR WASHER | 1 |
| 14 | 39625 | BEARING 6201-2RS | 1 |
| 15 | A03314 | WAVE WASHER | 1 |
| 16 | A03315 | CIRCLIP | 1 |
| SET 3 (17+25) | A03316 | SET GEARS | 1 |
| 18 | A03317 | NEEDLE BEARING | 1 |
| 19 | A03319 | SCREW ST4.2X22 | 6 |
| SET 4 (20-22) | A03320 | SPINDLE LOCK BUTTON SET | 1 |
| 23 | A03348 | GEAR BOX | 1 |
| 24 | A03322 | SQUARE NUT | 1 |
| 26 | A03323 | OILPROOF WASHER | 1 |
| 27 | 39619 | BEARING 608-2RS | 1 |
| 28 | A03324 | SCREW M4x8 | 2 |
| 29 | A03349 | ROTOR | 1 |
| 30 | 39618 | BEARING 607-2RS | 1 |
| 31 | A03327 | BEARING SLEEVE | 1 |



| POS. | CODE | DESCRIPTION | QTY |
|------|--------|---------------------|-----|
| 32 | A03350 | FAN BAFFLE | 1 |
| 33 | A03351 | PIN | 2 |
| 34 | A03352 | STATOR | 1 |
| 35 | A03353 | HOUSING | 1 |
| 36 | A03333 | SCREW ST3X8 | 4 |
| 37 | A03354 | CARBON BRUSH SET | 1 |
| 38 | A03355 | CARBON BRUSH HOLDER | 2 |
| 39 | A03356 | SPRING | 2 |
| 40 | | RATING LABEL | 1 |
| 41 | A03357 | SWITCH | 1 |
| 42 | A03343 | CAPACITOR | 1 |
| 43 | A03358 | SPEED REGULATOR | 1 |
| 44 | A03345 | SWITCH BUTTON | 1 |
| 45 | | BRAND LABEL | 1 |
| 46 | A03359 | SWITCH PUSH ROD | 1 |
| 47 | A03360 | SPRING | 1 |
| 48 | A03338 | SCREW | 1 |
| 49 | A03339 | LEAD PLATE | 1 |
| 50 | A03346 | POWER CORD SLEEVE | 1 |
| 51 | A03361 | REAR HOUSING | 1 |
| 52 | A03338 | SCREW | 1 |
| 53 | 39387 | POWER CORD | 1 |
| 55 | A03318 | HANDLE | 1 |
| 56 | A03362 | BEARING PLATE 608 | 1 |
| 57 | A03342 | INDUCTANCE | 2 |