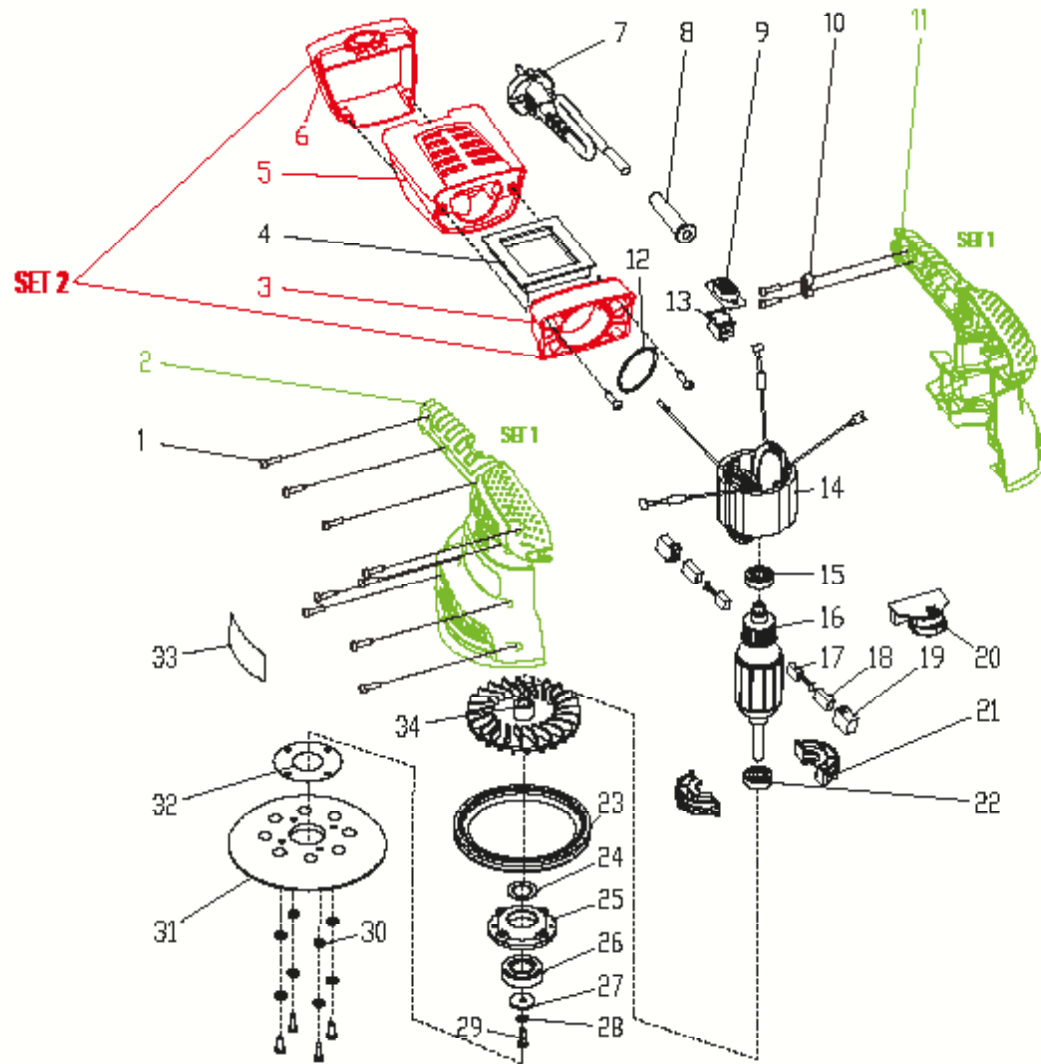


| POS. | CODE | DESCRIPTION | QTY |
|------------------|--------|----------------------|-----|
| 1 | A00474 | SCREW | 13 |
| SET 1 (2+11) | A00475 | LEFT&RIGHT HOUSING | 1 |
| SET 2 (3+5+6) | A00476 | DUST BOX | 1 |
| 4 | A00477 | DUST FILTER SET | 1 |
| 7 | A00411 | POWER CORD | 1 |
| 8 | A00379 | CORD GUARD | 1 |
| 9 | A00480 | SWITCH BUTTON | 1 |
| 10 | A00386 | CORD CLIP | 1 |
| 12 | A00482 | O RING | 1 |
| 13 | A00483 | SWITCH | 1 |
| 14 | A00484 | STATOR | 1 |
| 15 | A00485 | 608 BEARING | 1 |
| 16 | A00486 | ARMATURE | 1 |
| 17 | A00487 | CARBON BRUSH | 2 |
| 18 | A00488 | BRUSH HOLDER BOX | 2 |
| 19 | A00489 | BRUSH HOLDER | 2 |
| 20 | A00490 | SPEED REGULATOR | 1 |
| 21 | A00491 | BEARING HOLDER | 2 |
| 22 | A00492 | 628 BEARING | 1 |
| 23 | A00493 | BRAKE RING | 1 |
| 24 | A00494 | DUST-PROOF WASHER | 1 |
| 25 | A00495 | BASE PLATE CONNECTOR | 1 |
| 26 | A00496 | 6002 BEARING | 1 |
| 27 | A00497 | WASHER | 1 |
| 28 | A00498 | SPRING WASHER | 5 |
| 29 | A00499 | SCREW | 5 |
| 30 | A00500 | PLAIN WASHER | 4 |



| POS. | CODE | DESCRIPTION | QTY |
|------|--------|-------------------|-----|
| 31 | A00501 | BASE PLATE | 1 |
| 32 | A00502 | BASE PLATE WASHER | 1 |
| 33 | A00503 | LABEL | 2 |
| 34 | A01589 | FAN | 1 |