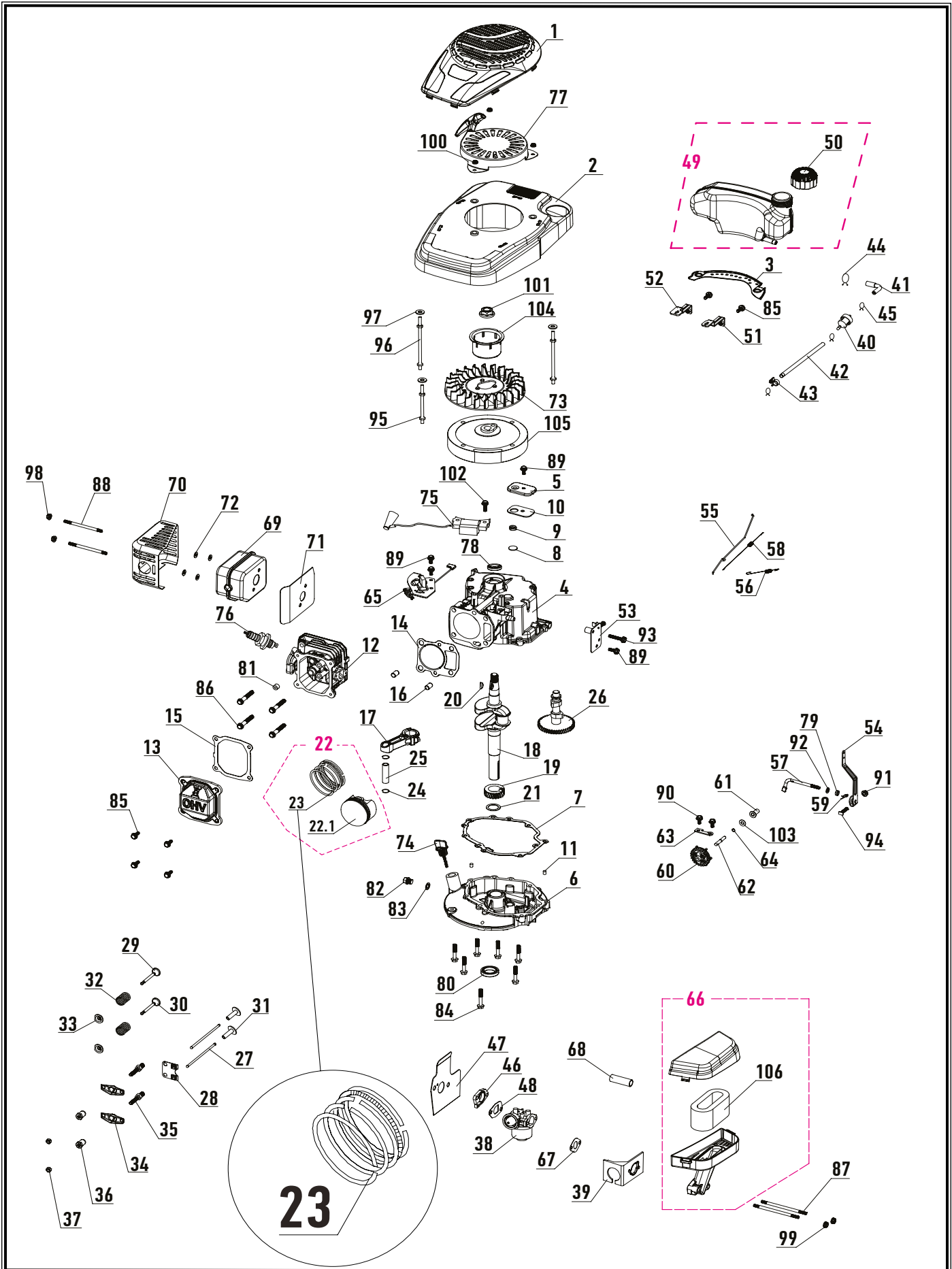


POS.	CODE	DESCRIPTION	QTY	POS.	CODE	DESCRIPTION	QTY	POS.	CODE	DESCRIPTION	QTY
1	A04576	CUTTING DECK	1	25	A04476	BOLT M8×50	4	51	A04575	REAR AXLE PRESSURE PLATE	2
2	A04597	FRONT COVER	1	26	A04517	FLASH NUT	4	52	A04525	WASHER	6
3	A04569	CUTTING BLADE	1	27	A04501	START HOOK	1	53	A04610	REAR PLASTIC PART	1
4	A04609	MULCHING PLUG	1	28	A04568	RUBBER CAP ON LOWER HANDLE	2	54	A04567	REAR PLASTIC PART COVER	1
5	A04582	BLADE FLANGE	1	29	A04583	BRAKE CABLE	1	55	A04624	GRASS BLOCK PLATE	1
6	A04594	FLAT KEY	1	30	A04580	DRIVE CABLE	1	56	A04602	BELT COVER	1
7	A04570	HEIGHT ADJUSTMENT HANDLE	1	31	A04504	BRAKE LEVER	1	57	A04593	BELT A-762	1
8	A04577	CONNECTING BAR	1	32	A04533	DRIVE LEVER	1	58	A04545	REAR BELT PULLEY	1
9	A04579	HEIGHT ADJUSTMENT BOARD	1	33	A04484	CABLE CLAMP	1	59	A04595	FRONT BELT PULLEY	1
10	A04584	FRONT AXLE SPRING	2	34	A04520	WHEEL 200Ø	2	60	A04581	GEARBOX TENSIONER SPRING	1
SET 1 (11+13+14)	A04598	UPPER GRASS BOX	1	35	A04596	WHEEL COVER 200Ø	2	61	A04586	ENGINE	1
12	A04571	GRASS BAG FRAME	1	36	A04521	WHEEL INNER COVER 200Ø	2	62	A04589	SCREW ST5X12F	7
13	A04642	FILLING INDICATOR	1	37	A04603	WHEEL 280Ø	2	63	A04636	SCREW ST5X16F	4
14	A04599	GRASS BOX HANDLE	1	38	A04565	WHEEL COVER 280Ø	2	64	A04590	SCREW ST5X20F	4
15	A04600	LOWER GRASS BAG	1	39	A04644	DUST-PROOF COVER,RIGHT 280Ø	1	65	A04592	CLIP	2
16	A04566	REAR FLAP	1	40	A04604	DUST-PROOF COVER,LEFT 280Ø	1	66	A04480	WASHER	1
17	A04572	FLAP AXLE	1	41	A04621	FRONT AXLE	1	67	A04475	WASHER	1
18	A04618	FLAP SPRING,RIGHT	1	42	A04578	REAR AXLE	1	68	A04635	BOLT M6X14	6
19	A04574	FLAP SPRING,LEFT	1	43	A04633	DRIVING GEAR,LEFT	1	69	A04560	NUT M6	8
20	A04573	LOWER HANDLE FIXER,LEFT	1	44	A04538	DRIVING GEAR,RIGHT	1	70	A04588	SCREW ST4.2X13	1
21	A04619	LOWER HANDLE FIXER,RIGHT	1	45	A04585	GEARBOX	1	71	A04556	BOLT M6X65	4
22	A04625	UPPER HANDLE	1	46	A04643	LEFT REAR AXLE BUSH	1	72	A04512	PIN	3
23	A04522	SOFT GRIP	1	47	A04601	RIGHT REAR AXLE BUSH	1	73	A04526	WASHER	2
24	A04622	LOWER HANDLE	1	48	A04614	FRONT AXLE BUSH, UPPER	2	74	A04524	PIN AXLE WASHER	1
				49	A04611	FRONT AXLE BUSH, LOWER	2	75	A04587	BOLT M8X18	3
				50	A04534	GEARBOX CLIP	1	76	A04510	NUT M8	4

POS.	CODE	DESCRIPTION	QTY
77	A04509	NUT M8	4
78	A04607	NUT M6	3
79	A04473	SCREW M6X40	1
80	A04561	WASHER	1
81	A04523	KEY	2
82	A04638	WASHER	2
83	A04541	DOWEL PIN	1
84	A04542	DOWEL PIN	2
85	A04562	WOODRUFF KEY	1
86	A04591	BOLT M8X25	3
87	A04481	WASHER	4
88	A04478	WASHER	8
89	A04558	SCREW M6X12	1
90	A04559	SCREW ST5X16Z	5
91	A04564	BOLT	1
92	A04563	BOLT	1
93	A04557	SCREW M5X20	2
94	A04605	NUT M5	2
95	A04606	NUT M6	3
96	A04718	CABLE HOLDER	1



POS.	CODE	DESCRIPTION	QTY
1	A04645	ENGINE UPPER COVER	1
2	A04646	ENGINE COVER	1
3	A04647	BACK PLATE OF ENGINE COVER	1
4	A04648	CRANKCASE	1
5	A04649	OIL FILTER COVER	1
6	A04650	CRANKCASE COVER	1
7	A04651	PAPER GASKET OF CRANKCASE	1
8	A04652	OIL FILTER VALVE	1
9	A04653	OIL FILTER SPRING	1
10	A04654	RUBBER WASHER OF OIL FILTER COVER	1
11	A04655	LOCATION PIN OF CRANKCASE	2
12	A04656	CYLINDER HEAD	1
13	A04657	CYLINDER HEAD COVER	1
14	A04658	GASKET OF CYLINDER HEAD	1
15	A04659	GASKET OF CYLINDER HEAD COVER	1
16	A04660	CYLINDER HEAD LOCATING PIN	2
17	A04661	CONNECTING ROD ASSEMBLY	1
18	A04662	CRANKSHAFT	1
19	A04663	TIMING DRIVE GEAR	1
20	A04664	WOODRUFF KEY	1
21	A04665	CRANKSHAFT WASHER	1
22	A04666	PISTON ASSEMBLY	1
22.1	A04667	PISTON	1
23	A04668	PISTON RING SET	1
24	A04669	CLIP OF PISTON PIN	2
25	A04670	PISTON PIN	1
26	A04671	AIR CAMSHAFT	1
27	A04672	MANDRIL OF VALVE ROCKER	2
28	A04673	MANDRIL FENCE	1
29	A04674	AIR-INLET VALVE	1
30	A04675	AIR-OUTLET VALVE	1
31	A04676	MANDRIL SLEEVE	2
32	A04677	VALVE SPRING	2
33	A04678	SPRING PLATE OF AIR-INLET VALVE	2
34	A04679	VALVE ROCKER	2
35	A04680	BOLT OF VALVE ROCKER	2
36	A04681	ADJUSTING NUT OF VALVE ROCKER	2
37	A04682	NUT OF VALVE ROCKER	2
38	A04683	CARBURETOR ASSEMBLY	1

POS.	CODE	DESCRIPTION	QTY
39	A04684	BACK PLATE OF CARBURETOR PRIMER	1
40	A04685	FUEL FILTER ASSEMBLY	1
41	A04686	FUEL PIPE	1
42	A04687	FUEL PIPE	1
43	A04688	FUEL PIPE CLIP	1
44	A04689	A CLIP OF FUEL PIPE (Ø10.5×Ø1)	1
45	A04690	B CLIP OF FUEL PIPE (Ø8×Ø1)	3
46	A04691	INSULATING MAT OF CARBURETOR	1
47	A04692	WIND GUIDE PLATE OF CARBURETOR	1
48	A04693	B GASKET OF CARBURETOR	1
49	A04694	FUEL TANK	1
50	A04695	FUEL TANK CAP	1
51	A04696	FUEL TANK BRACKET-LEFT	1
52	A04697	FUEL TANK BRACKET-RIGHT	1
53	A04698	THROTTLE CONTROLLER	1
54	A04699	THROTTLE CONTROL ROCKER(3 POSITIONS)	1
55	A04700	THROTTLE ROD	1
56	A04701	THROTTLE CONTROL PULL SPRING (3 POSITIONS)	1
57	A04702	TIMING SWING ROD	1
58	A04703	THROTTLE SPRING	1
59	A04704	SPRING SPLIT PIN	1
60	A04705	GOVERNOR GEAR	1
61	A04706	SLIDING SLEEVE	1
62	A04707	GOVERNOR GEAR SHAFT	1
63	A04708	PLATE OF GOVERNOR SHAFT	1
64	A04709	CLIP OF GOVERNOR GEAR SHAFT	1
65	A04710	BRAKE ASSEMBLY	1
66	A04711	AIR CLEANER ASSEMBLY	1
67	A04712	PAPER GASKET OF AIR CLEANER	1
68	A04713	WASTE PIPE	1
69	A04714	EXHAUST	1
70	A04715	EXHAUST MUFFLER SHIELD	1
71	A04716	EXHAUST MUFFLER HEAT INSULATION PAD	1
72	A04717	SMALL WASHER OF EXHAUST	4

POS.	CODE	DESCRIPTION	QTY
73	A04952	FAN	1
74	A04719	OIL GAUGE ASSEMBLY	1
75	A04720	IGNITION	1
76	A04721	SPARK PLUG	1
77	A04722	STARTER	1
78	A04723	OIL SEAL	1
79	A04724	OIL SEAL OF TIMING SWING ROD	1
80	A04725	OIL SEAL OF CRANKCASE COVER	1
81	A04726	VALVE OIL SEAL	1
82	A04727	DRAIN BOLT	1
83	A04728	WASHER	1
84	A04729	BOLT M6X28	7
85	A04730	BOLT M6X16	6
86	A04731	BOLT M8X45	4
87	A04732	STUD BOLT M6X110	2
88	A04733	STUD BOLT M6X88	2

POS.	CODE	DESCRIPTION	QTY
89	A04472	BOLT M6X12	6
90	A04735	BOLT M6X9	2
91	A04606	NUT M6	1
92	A04737	WASHER	1
93	A04738	BOLT M6X25	1
94	A04739	BOLT M6X23	1
95	A04740	BOLT A M6X70	1
96	A04741	BOLT B M6X93.5	2
97	A04478	WASHER	3
98	A04474	NUT M6	2
99	A04607	NUT M6	2
100	A04745	NUT M5	3
101	A04746	FLYWHEEL NUT	1
102	A04747	BOLT M6X20	1
103	A04748	WASHER	1
104	A04954	STARTING HUN	1
105	A04953	FLYWHEEL	1
106	A04749	AIR FILTER	1